

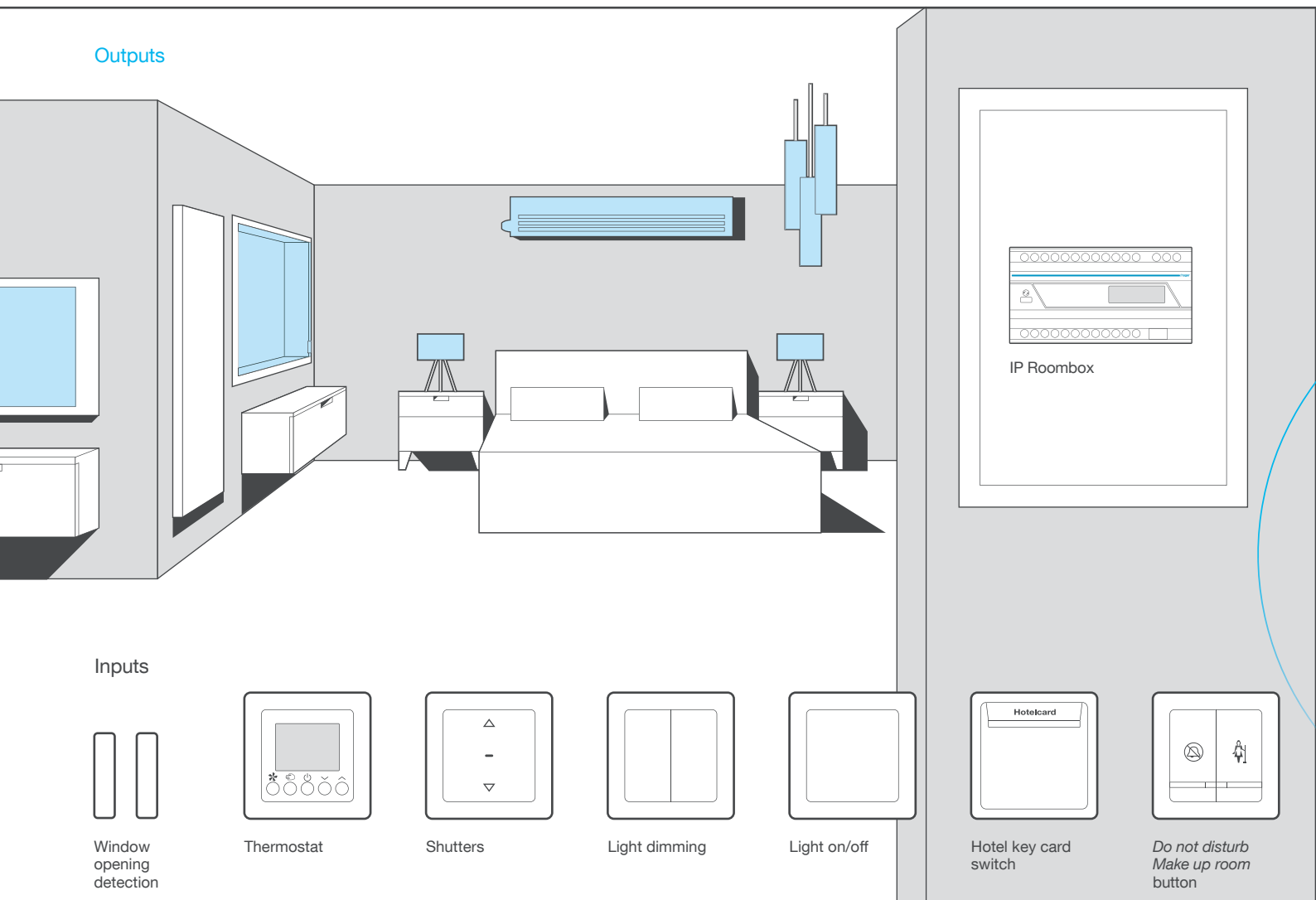
IP Roombox
Hotel Room Management



Hotel solutions

Versatile room management system

You need a simple solution which allows you to control all the hotel room electrical applications? Hager offers you a unique combination with the IP Roombox - a modular device with configurable inputs and outputs, accompanied with the Hager Hotel System Manager - a smart interface to remotely manage and control the applications of your rooms (heating, air conditioning, lighting, shutters,...).



IP Roombox

Specifically developed for the requirements of hotel projects, IP Roombox is a DIN-rail modular device which offers highest flexibility of applications.

All outputs are universal relay outputs, controlling any kind of application including lighting, shutters and HVAC, which can be combined for room automation functions:

- group control for several devices from one simple switch,
- automatic sequences linked to presence detectors or hotel key card switch.

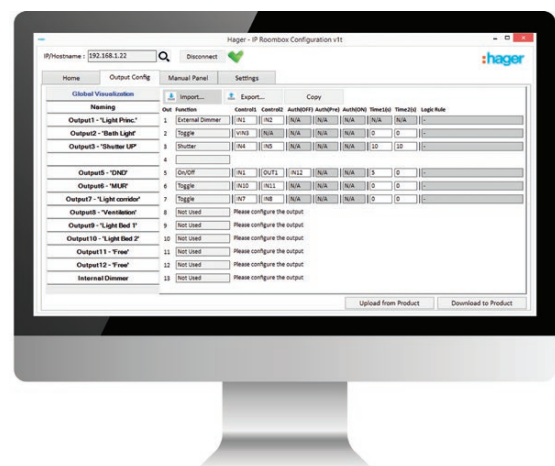
Embedding Hager universal dimming technology, any lighting circuit can be converted to a dimming function.



Hotel System Manager

It's quick and easy to configure your IP Roombox:

- 1 Wire your inputs and outputs to your IP Roombox
- 2 Connect to the IP Roombox and simply configure the inputs/outputs combinations and functions.
- 3 Copy your configuration from one room to thousands in less than 5 minutes!



Hotel System Manager

The Hotel System Manager software is the interface for better services and facility management. With scalable user rights, this is offering many possibilities to the different service departments:

- desk teams have remote access to the electrical functions in the room and can also schedule customised scenarios

- on guest request (wake-up, welcome...);
- facilities will get internal messages for maintenance and have remote access to the global installation;
- cleaning service will visualise easily the empty rooms or make-up room signals.

IP Roombox

The IP Roombox is the central device with inputs and outputs. It is available in 12 inputs/12 outputs and 20 inputs/20 outputs versions. Equipped with a LCD display to view and set network settings.

External dimmer

It is compatible with all the Hager IP Roombox. It converts one on/off output in dimmer output

- Command and control directly from the inputs of the IP Roombox.
- Load button test on front face.

- Configuration with the IP Roombox configuration software.
- Add one or several external dimmers depending on your need.

Description	Characteristics	Width in 17.5 mm	Cat. ref.
IP Roombox basic	12 inputs and 12 outputs - network connection: RJ45	9	EEF012
IP Roombox enhanced	20 inputs and 20 outputs - network connection: RJ45	14	EEF020*
	12 inputs and 12 outputs with dimmer - dim power embedded: 1x300W - network connection: RJ45	10	EEF012D
	20 inputs and 20 outputs with dimmer - dim power embedded: 1x300W - network connection: RJ45+RS485	14	EEF020D*
External dimmer	- compatible only with Hager IP Roombox - power: 500W	2	EEA001A



EEF012



EEF012D

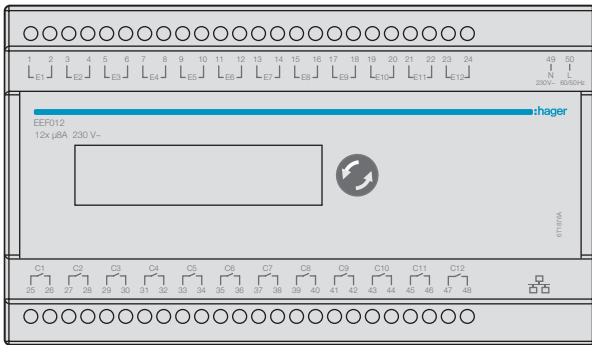


EEA001A

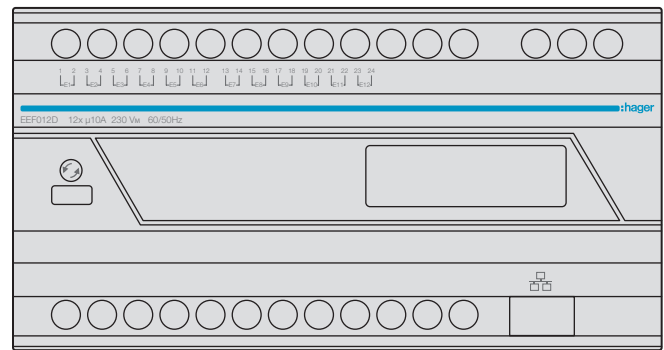
* Available Q4 2016

Description

IP Roombox basic



IP Roombox enhanced



The IP Roombox is available with 12 inputs/12 outputs. The IP Roombox can work as standalone or inside an IP network with software solutions. The inputs/outputs can be configured freely depending on the project needs.

Technical characteristics

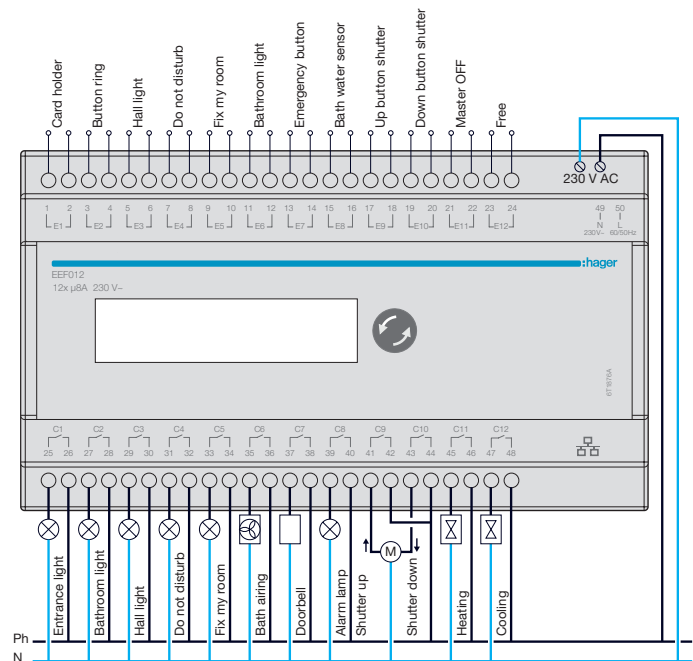
	IP Roombox basic	IP Roombox enhanced with embedded dimmer
Reference	EEF012	EEF012D
Power consumption	0.9 W	1.3 W
Number of binary inputs	12 dry contacts	
Number of binary outputs	12 relay outputs 8A	12 relay outputs 10A
Number of dimming outputs	NA	1 x 300 W
Input voltage	230V AC +10%/-15%, 50/60 Hz 240V AC +6%/-6%	
Contact capacity	please refer to detailed table load capacity	
Type of protection	IP20	
Operating temperature range	-10 to +45°C	
Mounting	DIN rail	
Dimensions	9 modules (158 x 86 x 60 mm)	10 modules (171 x 90 x 60 mm)
Weight	360 gr	550 gr
External dimmer compatibility	yes	

Functions

- Lighting ON/OFF
- Timer
- Toggle
- Shutter 230 V AC and 24V DC
- HVAC (Regulation is not provided by the IP roombox. Rather it must be provided by an external thermostat, the outputs of which can be interfaced.)
- Lighting dimming with optional external dimmer EEA001A
- Hotel management and monitoring software (web based application).
- Internal dimmer comfort (Only available in IP Roombox enhanced EEF012D)

Outputs can be controlled with the combination of inputs and outputs and with the help of logic operators. Time-based control with pre-time and post-time configuration. Control with rising or falling edge sensitive to changes. Last situation memory against power failure.

Connection diagram hotel example



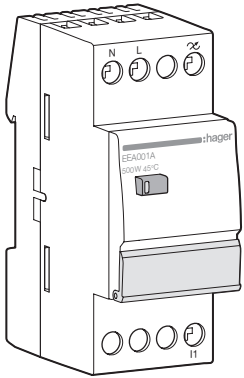
LCD menu

Via the LCD screen available, it is possible to know the status of the device channels and the network settings. The up line shows the current status of every input while the bottom line shows the status of the outputs.

Configuration

The complete configuration of the device is performed via a simple computer application. No installation required, simple executable file with Import/Export possibilities.

Description



The external dimmer EEA001A allows to convert any ON/OFF output of all IP Roombox into a dimming output with a simple wiring change. This product is a Hager universal dimmer with automatic load detection and learning mode to dim efficiently CFL and LED lamps. The lighting level can be adjusted using buttons connected to the inputs of the IP Roombox. The integrated push button 1 allow turning ON(100%) or OFF(0%) the lamp connected to the dimmer.

Learning mode

Learning mode allows to learn load characteristics in order to control it more easily.

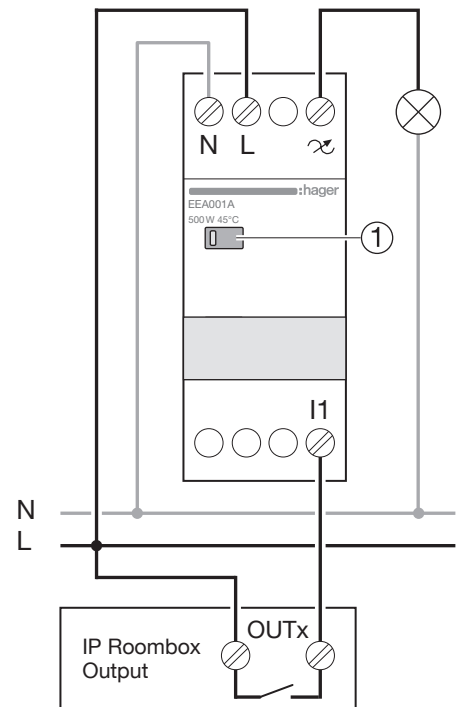
Protection against overheating or overloads

In the event of overheating or overload, power available is automatically reduced.

Technical characteristics

Electric characteristics	
Supply voltage	230V AC -15/+10% 50/60Hz
No-load consumption	0,2W
Operating altitude	2000m max.
Pollution degree	2
Surge voltage	4kV
Functional characteristics	
Supplied power	<ul style="list-style-type: none"> • 230V incandescent and halogen lamps: 500W max. • ELV 500VA max. halogen lamps via ferromagnetic transformer The transformer shall not be used under 75% of its nominal load. • ELV halogen and dimmable 500VA max. ELV LED lamps via electronic transformer. The maximum number of lamps allowed shall be calculated based on transformers output. • Dimmable fluo-compact lamps with 230V built-in ballast: 100W max. • 230V dimmable LED lamps: 100W max. (10 lamps max.) • Non-dimmable fluo-compact and LED lamps are not compatible with this product.
Control input	The command input can only be connected to an output of the IP roombox The power supply to the EEA001A dimmer and the IP Roombox output to which the dimmer is connected must be connected in the same phase.
Max. connection distance	3 m
Environment	
Operating temperature	-10 °C to +45 °C
Storage temperature	-25 °C to +70 °C
Connection	
Flexible capacity	1.5 mm ² - 6 mm ²
Rigid capacity	1.5 mm ² - 6 mm ²
Standards	IEC 60669-1; IEC60669-2-1

Wiring diagram



Hager Electro S.A.S.
132 Boulevard d'Europe
B.P.3
67215 Obernai Cedex
France

www.hager.com

