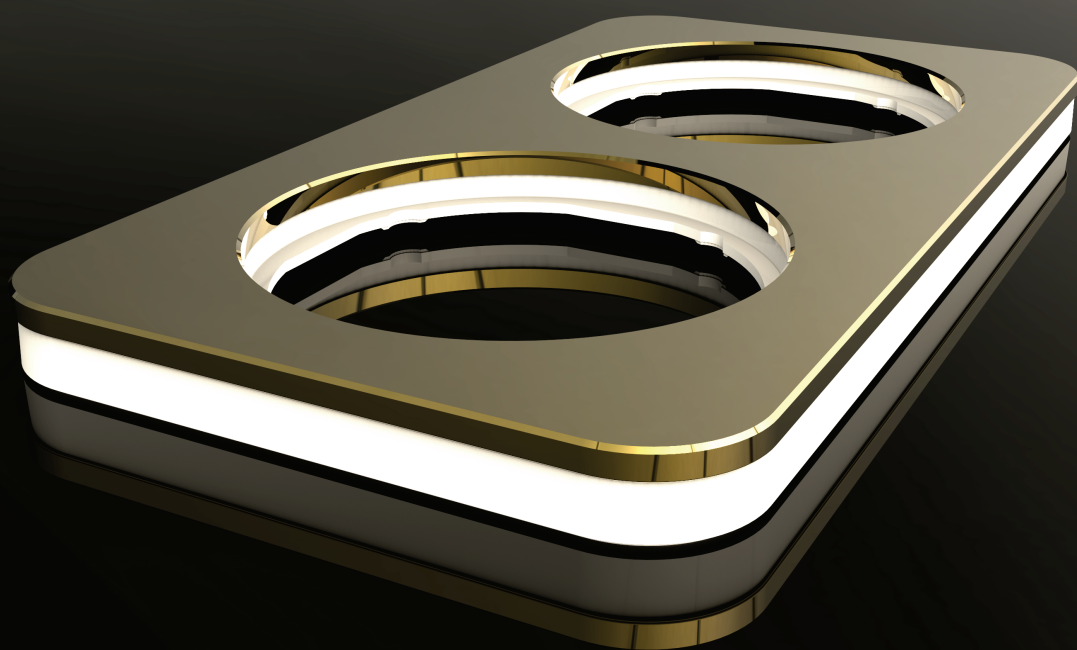


MANUFAKTUR



**BERKER MANUFAKTUR**

# CONTENT

INDIVIDUAL TREND	03
Section 01 PAINTING	04
Section 02 ANODIZING	08
Section 03 MATERIALITY	15
Section 04 GLASS	31
Section 05 LABELING	39
Section 06 SPECIAL SOLUTIONS	46
ABOUT US	54

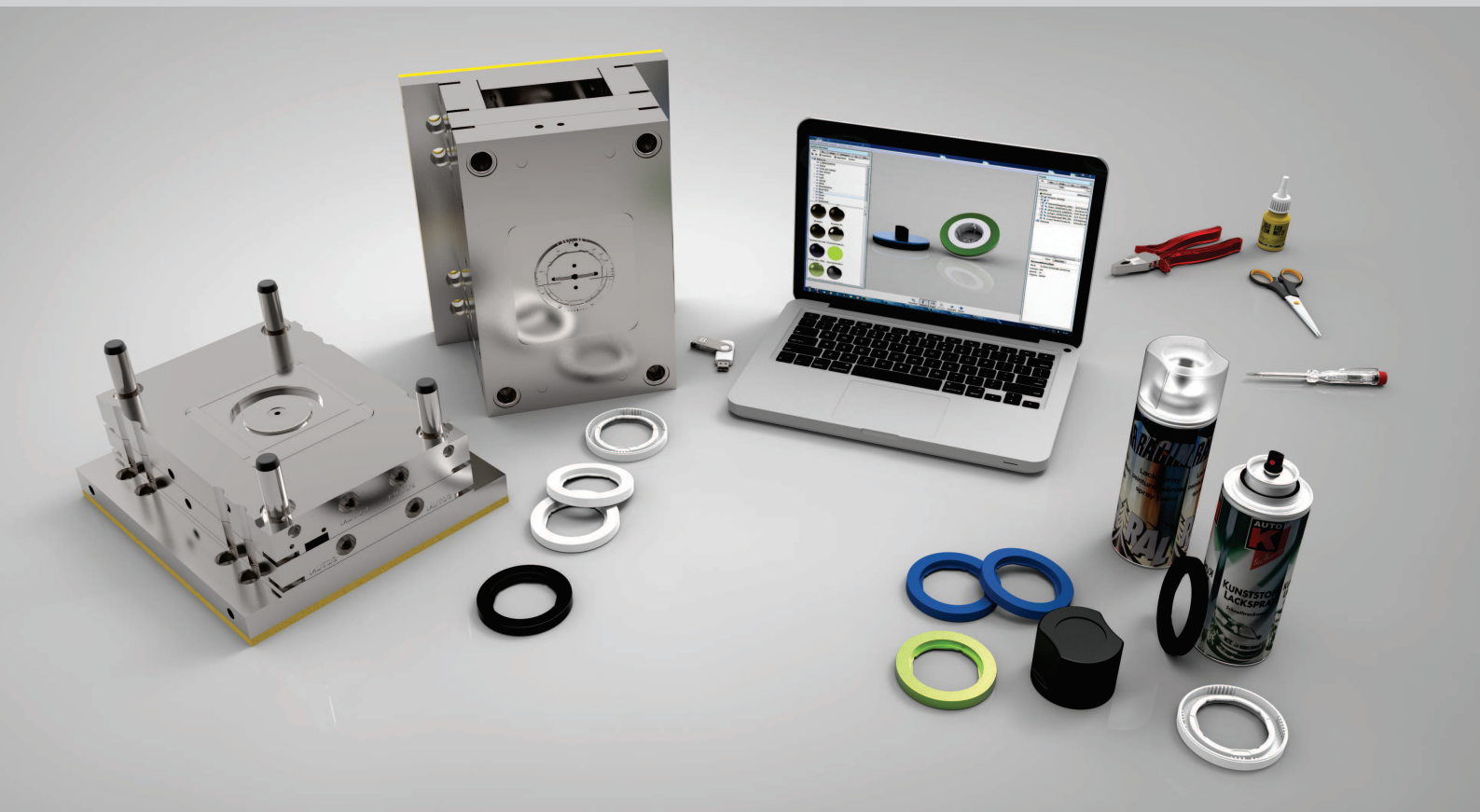
## INDIVIDUAL TREND

More and more people are following the trend of not following a trend. For these people, there is Berker Manufaktur.

This is where we create switches that are a real blend of hi-tech and handicraft, that are utterly unique. We often design items together with architects and planners for a very particular property or for a special project.

Some have their source in the very special wishes of a property owner who is looking for something which they can simply not find available on the market.

It's a source of pride to us that we can make these wishes a reality. What matters is individuality, so almost every product is one of a kind. And therefore as individual as the environment for which it has been made.



### POSSIBLE VARIANTS



The surprising range of professional paint systems with qualified paints, to make our products more individual in color and feel.

Paintable are plastic, aluminium and stainless steel.  
Colors in mat by RAL code or color sample.

**BERKER R.3  
SILK MAT FINISH**



**BERKER R.1**  
**SILK MAT FINISH**

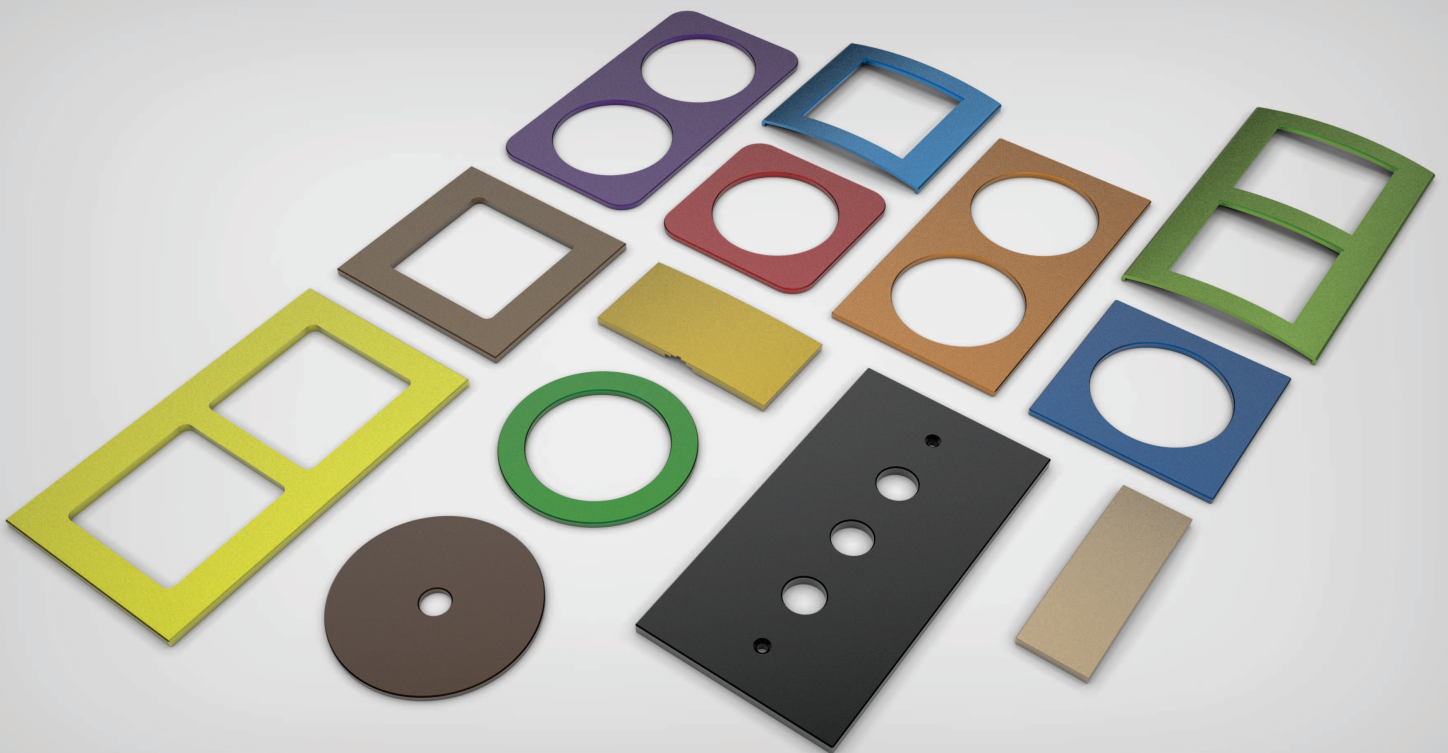


**BERKER K.1**  
**REAL STAINLESS STEEL AND ALUMINIUM MATT LACQUERED**



### POSSIBLE VARIANTS

Anodizing with "Clariant" colors.  
Satin-finished or brushed surface

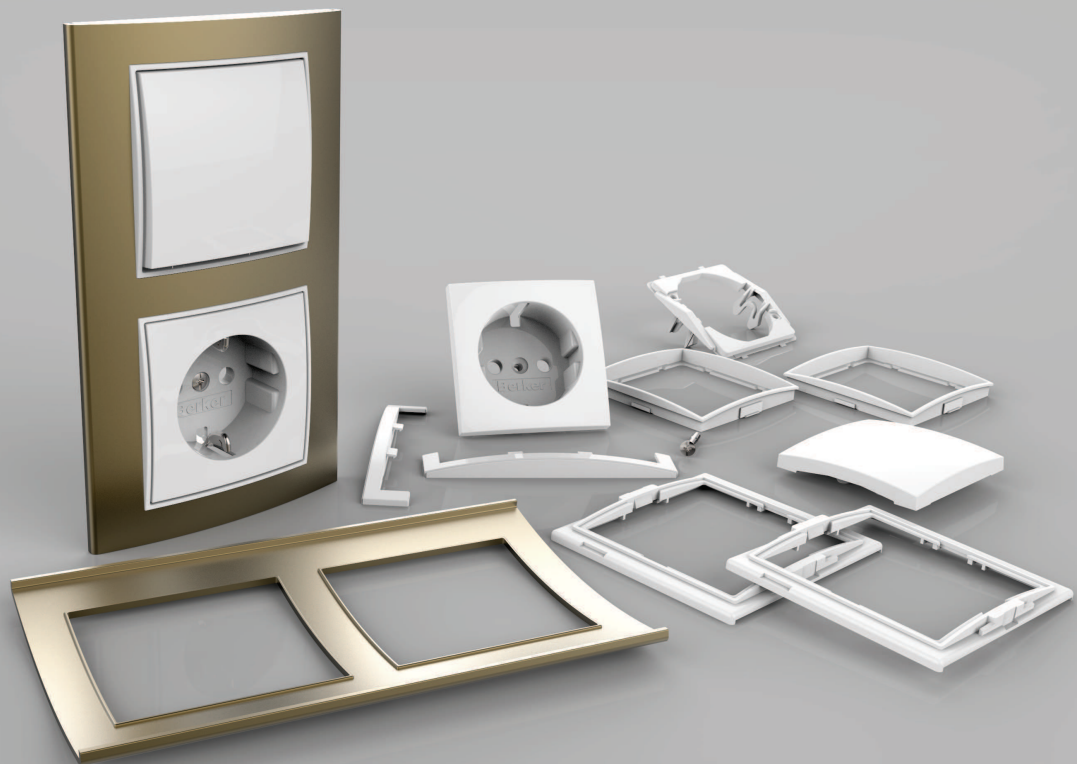


Not only a variety of colors is our claim, as well the high quality and modernity of products. The high-quality anodized aluminum integrates, in its diversity, perfectly in any modern interior style - either at home or at the office.

Anodized colors and surfaces are characterized by high practicality, in terms of cleaning and scratch resistance.



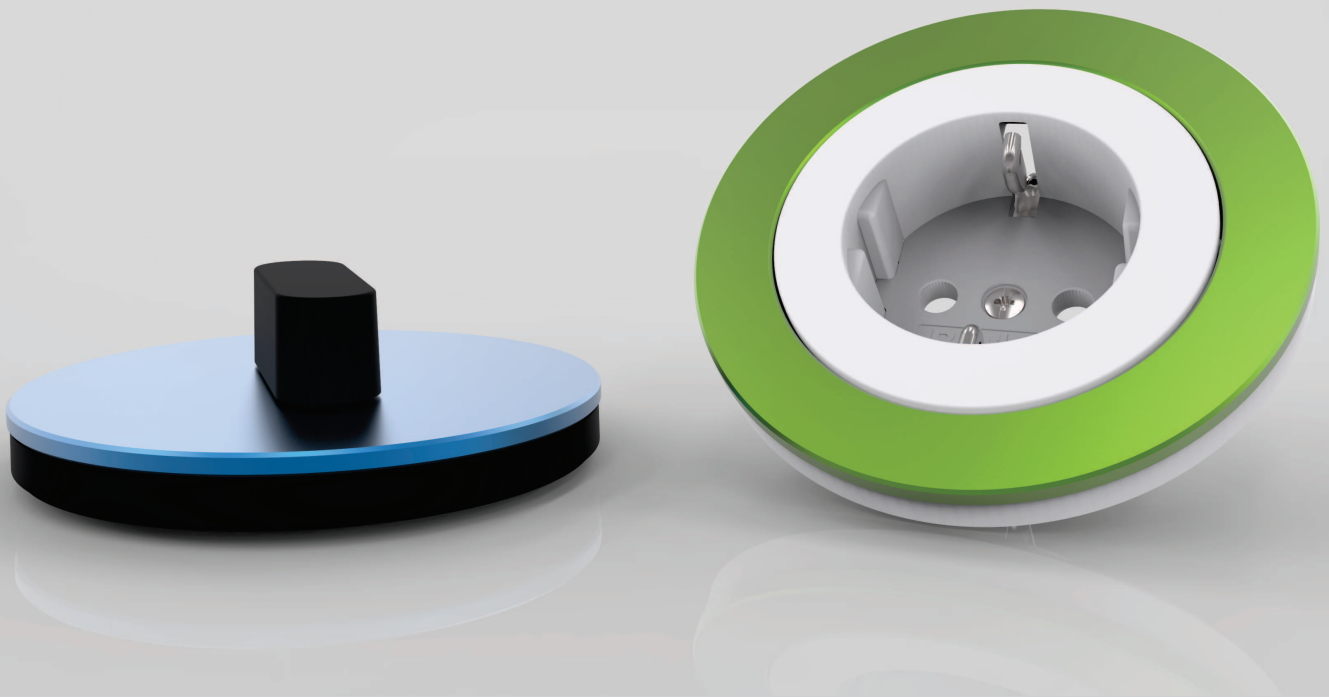
**BERKER B.3**  
**ALUMINIUM BRONZE ANODIZED**



**BERKER R.1**  
**ALUMINIUM ANODIZED**



**BERKER R.Classic**  
**ALUMINIUM ANODIZED**



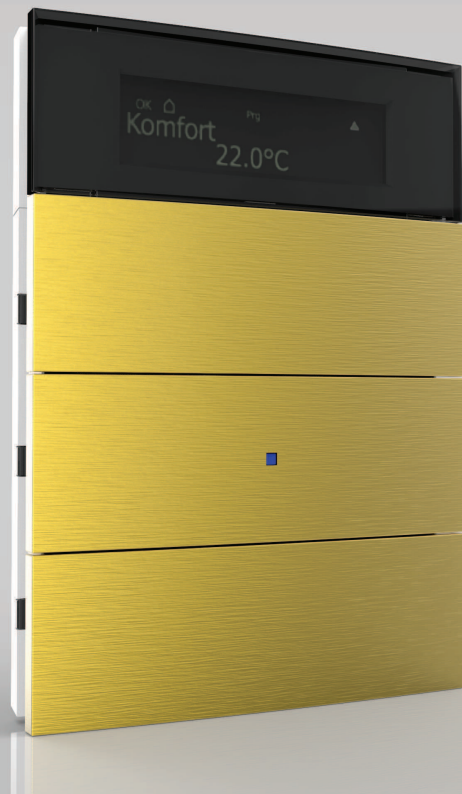
**BERKER B.7**  
**ALUMINIUM ANODIZED**



**BERKER R.3**  
**ALUMINIUM BRUSHED GOLD ANODIZED**



**BERKER B.IQ**  
**ALUMINIUM BRUSHED GOLD ANODIZED**



### POSSIBLE VARIANTS

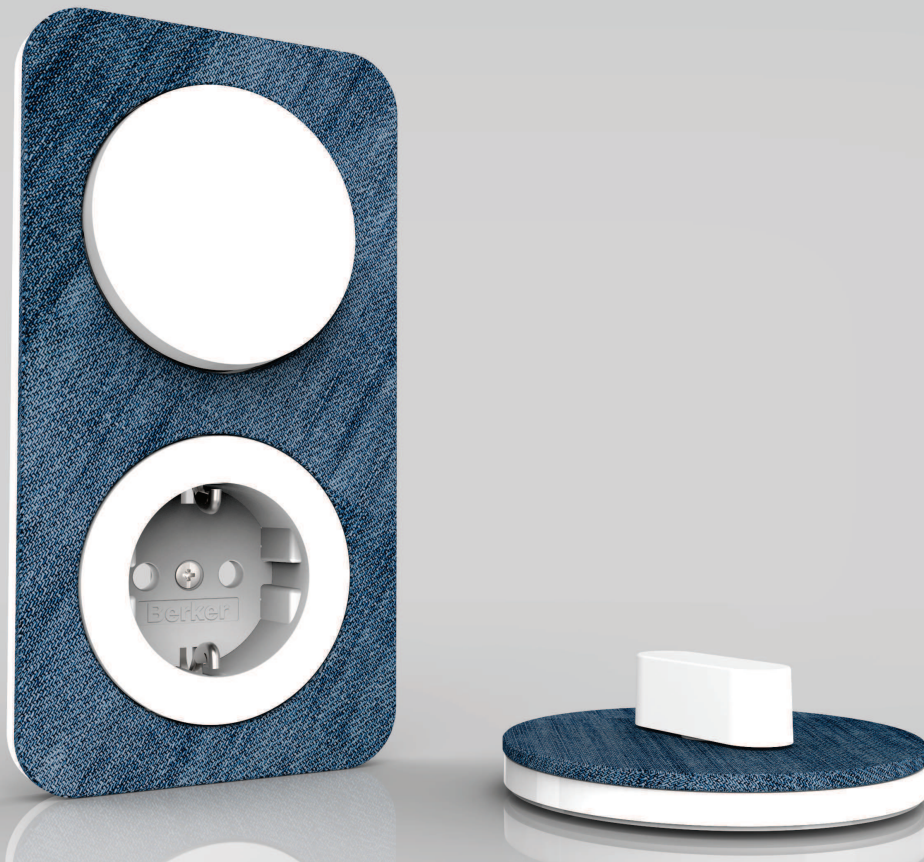
BRUSHED STAINLESS STEEL WITH MILLED CHAMFER

BRUSHED BRASS

SATIN SANDED

BURNISHED BRASS

etc.



With Berker Manufaktur we provide our switches with individual and special surfaces. Each one unique, custom made and in real material.

**BERKER R.1**  
**BRUSHED STAINLESS STEEL WITH MILLED CHAMFER**





**BERKER R.3**  
**BRUSHED BRASS**



**BERKER R.3  
BURNISHED BRASS**



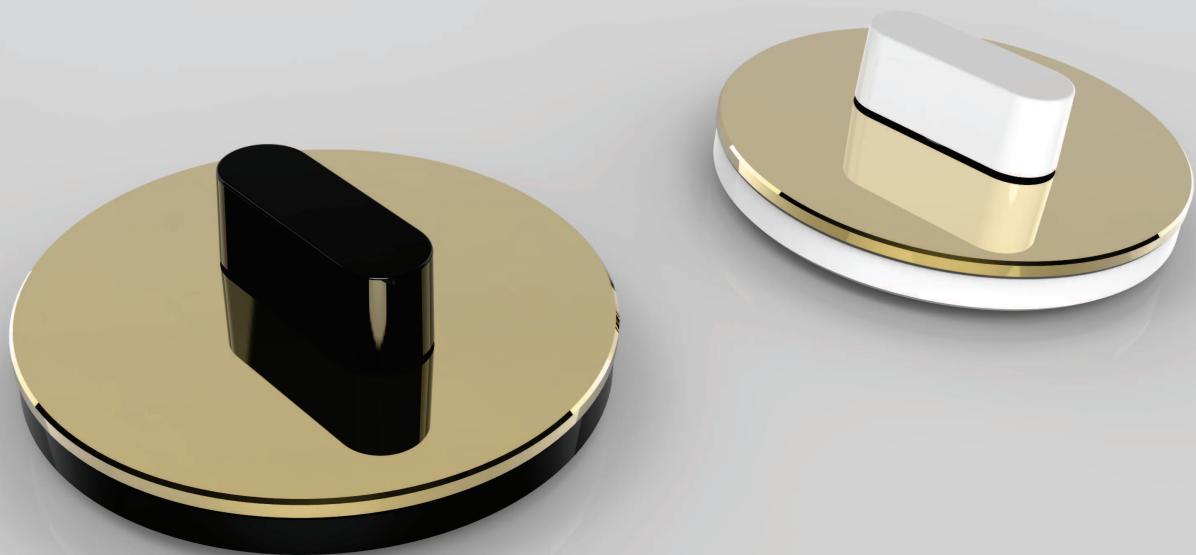
**BERKER R.1  
CHROME**



**BERKER R.3  
BLACK CHROME**



**BERKER R.Classic**  
**GOLD 24K**



# BERKER B.7 COPPER



**BERKER R.1  
PATINATED**



**BERKER R.1  
STRUCTURAL COATED**





**BERKER B.IQ**  
**BURNISHED BRASS**



# BERKER B.IQ BLACK CHROME



**BERKER TS**  
**BLACK CHROME**

